

DSlave VAV Slave Unit



The **D-SLAVE** is a combination heater current valve and connection box designed for use with the D-Series DV1 VAV controllers.

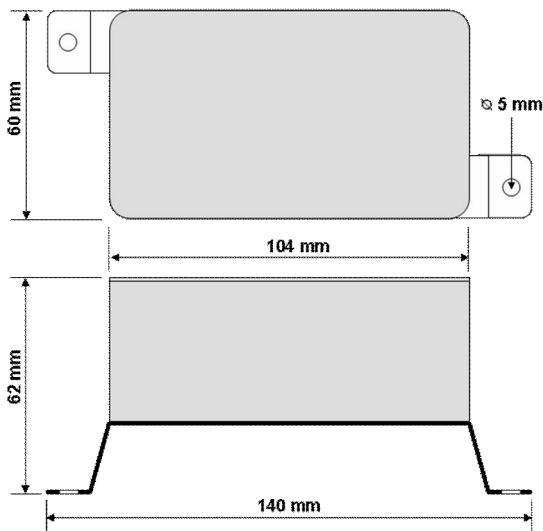
Features

- Screw terminal connectors are provided for the connection of the mains input, heater output and the damper motor output.
- Plug-in connectors are provided for the connection of the temperature sensors, the external Setpoint potentiometer and the master / slave control cable(s).
- The current valve can optionally be upgraded to a 3 kW capacity with the inclusion of an external heat sink.
- The connection to the master controller and other slave units is by means of plug-in connectors

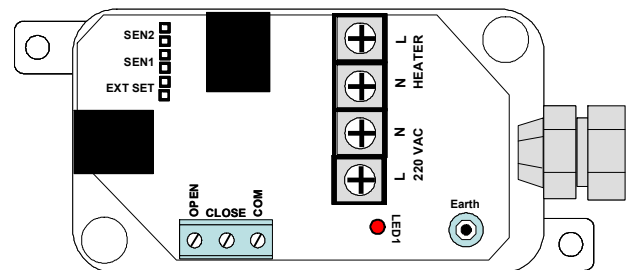
Technical Data

- Heater current valve
- Mains operating voltage 220 VAC
- Output capacity (Standard) 1.5 kW
- Output capacity (with optional heatsink) 3.0 kW
- Input control signal loading 12 mA

Dimensions

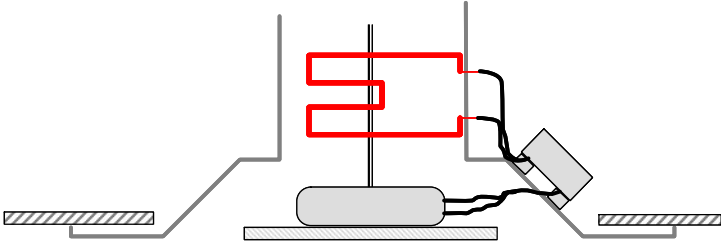


Connections

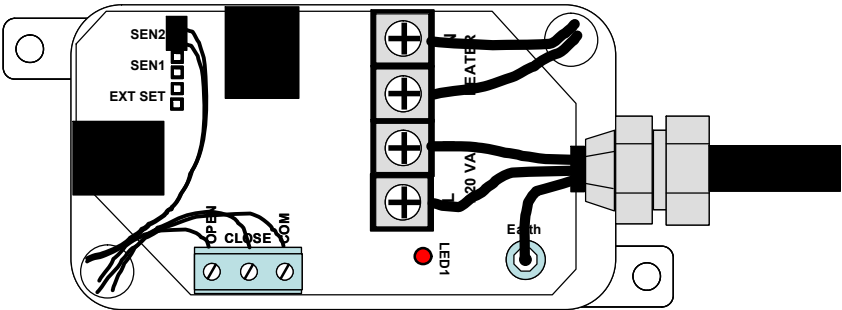


Installation

Mounting the D-Slave



D-Slave Wiring



General D-Slave Configuration

